

Moving Details.

PATCH FITTINGS AND PROFILE SYSTEMS



Moving solutions. Living spaces with glass.

With our passion for the material glass we create something really big from something small. Pure dynamics develop from perfectly coordinated, technically precise glass fittings.

Because it is the small elements with a big effect that make the movement of glass between rooms possible in the first place.

That is our self-conception. And we are committed to this with all our knowledge of the possibilities of glass in moving solutions.





MUNDUS fittings

enable the stepless adjustment of the vertical glass gap dimensions and the perfect fit with regard to the pivot axis

Patch fittings and profile systems

The type of hardware determines the look: With our attractive corner fittings and profile systems, every all-glass installation is perfectly staged. Precise, modular solutions for architecture flooded with light.

The demand for fascinating, light-flooded architecture requires elegant, design-oriented solutions made of fittings and glass. We offer an extensive range of high-quality glass fittings to meet this demand. Technically sophisticated, visually attractive and with a wide range of combinations, toughened glass assemblies can be realised individually and modularly.



MANET

impresses with its unmistakable design:
Single-point fixings in stainless steel



▲
MUNDUS fittings
enable the stepless
adjustment of the
vertical glass gap
dimensions and the
perfect fit with regard
to the pivot axis

MUNDUS

Patch fittings with unique design

MUNDUS fittings impress with their elegant shape, high-quality materials and careful workmanship. The fittings do without any visible connecting elements between the basic body and the caps as a design element. Thanks to their multi-dimensional adjustability, MUNDUS fittings simply fit precisely.

Your advantages:

- Clear design, no visible screw-fixing of cover caps
- Wide range of colors and materials
- Fast installation – easy re-adjustments of the ready-installed assembly
- Stepless adjustment to glass thicknesses possible, without changing gaskets
- Use of laminated safety glass with the tested Clamp & Glue bonding technology for high demands on quality and safety
- Easy to replace or retrofit in existing UNIVERSAL systems due to identical glass processing.

Find more information
and documents here.





**UNIVERSAL**

Single-action and double-action doors can be integrated into toughened glass assemblies with or without overhead panels.

UNIVERSAL

All-rounder for any room

Whether a continuous glass front in an alignment or an angled design is required, the UNIVERSAL range offers the right fitting. The UNIVERSAL patch fittings can be integrated into toughened glass assemblies with or without overhead panels. Single doors with direct connection to the floor and ceiling or integrated into a post and beam structure are also possible. UNIVERSAL – as the name suggests.

Your advantages:

- Corner, angle or fin fittings, locks and strike boxes: every part matches the other.
- Simple glass processing
- Variable pivot point
- Suitable for installations facing the exterior

Find more information
and documents here.





UNIVERSAL Motion NG33

Door closing without additional floor spring: A great advantage, especially in the case of high-quality floor coverings or under-floor heating.

UNIVERSAL Motion NG33

The extra on a door with patch fittings

The fitting convinces by its compact design and powerful function and closes even heavy doors with ease. Visually, it matches the standard UNIVERSAL fittings and thus equips doors in toughened glass assemblies with included convenience: Door closing without additional top door closer or floor spring.

Your advantages:

- Compact technology
- Secure, hydraulic closing function
- Easy installation

Find more information
and documents here.





▲ **BEYOND**

Due to the pivot point being close to the glass edge with the continuous rod in cylindric form the glass gap remains minimal even during door movement.

BEYOND

Pinch-free opening and closing

In the case of BEYOND, the pivot point is extra close to the glass edge. The short rod solution conveys a special visual ease. Thanks to the constant minimum gap during the rotational movement in the uninterrupted pivot rod version, the risk of trapped fingers can almost be ruled out.

Your advantages:

- Pinch-free with uninterrupted pivot rod version
- No need for door frame
- High transparency due to small fitting size
- Patented fitting system

Find more information
and documents here.





Visually coordinated
 If UNIVERSAL corner fittings are used in adjacent areas, then these EA corner fittings are a visually matching alternative for doors with a 180° opening requirement.

EA

Patch fittings for single-action doors with 180° opening width

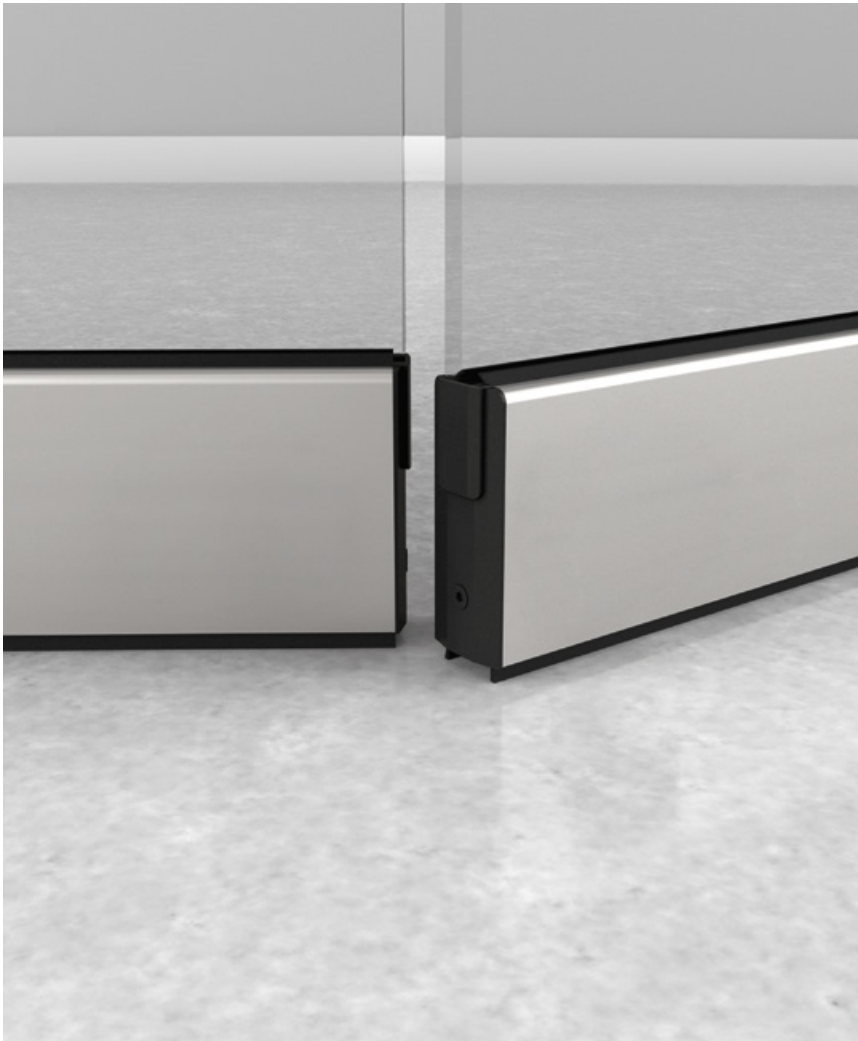
The pivot point outside the glass plane allows single-action doors with EA corner fittings to open up to 180°. They then stand directly against the aligned wall and not in the way.

Your advantages:

- Diverse surfaces and colors
- 180° door opening
- Long lifetime
- Suitable for arched doors
- Suitable for installations facing the exterior (door opening to the inside)

Find more information and documents here.





4
TP/TA EASY Safe
Door rails
ensure a high level of
stability for glass doors

TP/TA EASY Safe Door rails

Reliable protection for lower glass edges

The door rails ensure a high level of stability for particularly wide or highly frequented doors when used simultaneously at the top and bottom edges of the door. At the bottom, they serve – as an alternative to corner fittings – to protect against impacts. Thanks to the design and surfaces matched to the corner fittings, they are therefore the visually harmonious and at the same time safe accessory in complex toughened glass assemblies.

Your advantages:

- Stability and glass protection
- Matched to our corner fittings
- Additional security by integrated locks

Find more information
and documents here.





SG Center and corner locks
 The right locks for any toughened glass assembly

SG Center and corner locks

The lock programme that allows for all possibilities

The lock programme for toughened glass assemblies offers the right locks for different requirements: Corner locks to match the UNIVERSAL range, centre locks – among others in the OFFICE Junior design – and slide-on locks that can even be retrofitted without glass processing.

Your advantages:

- Easy glass processing
- Secure fixing thanks to a large clamping surface
- High quality materials and solid designs
- Choice of corner, centre and slide-on locks
- Reliable usage properties
- Selection of locks tested in accordance with DIN EN 18251
- Selection of locks for anti-panic solutions

Find more information and documents here.



MANET
impresses with its
unmistakable design:
Single-point fixings
in stainless steel



MANET

Frameless with single-point fixings for advanced all glass look

Point-fixed fittings with a distinctive design in stainless steel. A solution that underlines the generosity of transparent architecture and focuses on high flexibility. In addition to doors and standard toughened glass assemblies, unusual formats can also be realized in very special architecture.

Your advantages:

- Flexibility and a wide range of variants
- No need for a door frame
- Matching steel design for sliding and pivoting doors
- Re-adjustability without dismantling

Find more information
and documents here.





**Connecting to wall,
ceiling or floor**

A perfectly fitted
border all round: The
wall connecting profile
provides a secure hold
for the glass.

Wall connecting profiles

Load bearing profiles for side-lights and overpanels

The profiles, which are available in stainless steel and aluminium with various surfaces, provide a clean, elegant connection of toughened glass assemblies toward the wall, the ceiling or the floor. The load-bearing profiles ensure that the side-lights or overpanels are securely held.

Your advantages:

- All around secure hold due to load-bearing profile
- Also available as a safety version on drilled glass
- Elegant framing of toughened glass assemblies
- Finishes: Aluminium anodized or powder coated in a color of your choice and stainless steel

Find more information
and documents here.





MR 22 / MR 28 Profile systems

The circumferential profiles form a narrow border to the building, while glazing bar profiles can be used as a connection between the glass panes.

MR 22 / MR 28 Profile systems

Non-bearing profiles for the interior

The delicate and elegant MR 22 and MR 28 profile systems form a circumferential frame for toughened glass assemblies mounted to the wall, ceiling and floor. With a visible profile width of only 22 or 28 mm, nothing is taken away from the effect of the glass surfaces.

Your advantages:

- Delicate solution for the interior
- Easy to dismantle and reassemble
- Use of system-specific glazing bar profiles for even more creativity
- Glazing bars for für MR 28
- Segmented assemblies with MR 28

Find more information
and documents here.



┌ We present DORMA-Glas products ┐





DORMA-Glas GmbH

Max-Planck-Straße 33-45
D - 32107 Bad Salzufen

T +49 5222 924-0

info@dorma-glas.com
www.dorma-glas.com

 DORMA-Glas GmbH
 DORMA-Glas GmbH



WN 80051562632
Subject to change without notice